



FOR NEW EQUIPMENT SALES, CALL
866.966.2969
TO SPEAK WITH AN ALTEC REPRESENTATIVE
or visit us online at altec.com

 **Altec**
TELESCOPIC CRANE

STANDARD FEATURES

- Altec LMAP (Load Moment & Area Protection) System
 - » Rated Capacity Limiter
 - » Displays: Boom Length, Boom Angle, Load on Hook, Percent of Rated Capacity
 - » Operator Defined Audible Alarm Set-Points for Boom Angle, Length and Rotational Position
- Dual Entry 20° Tilt Cab with Heater and A/C
- Outrigger Boom Interlock System
- Outrigger Motion Alarm
- Winch Drum Rotation Indicator
- Anti-Two Block Device
- Winch Control at Load Hook Stow Point
- Hydraulic Oil Cooling System
- 15,000 lb 2-Speed High-Performance Piston Winch
- Rotation Resistant Wire Rope

OPTIONS

- ANSI A92.2 Compliant Aerial Operation Package
 - » 2-Man, Steel Platform
 - Fixed, 800 lb (362.8 kg) Capacity, or
 - Rotating, 1,200 lb (544.3 kg) Capacity
 - » Radio Remote Controls
 - » Fall Protection
- Platform Hydraulic Tools & Intensifier Package
- 1-Piece 31 ft (9.4 m) Jib
- 2-Piece 55 ft (16.7 m) Offsetable Jib, 31 ft (9.4 m) Retracted
 - » 0, 15, and 30 degree offset positions
 - » Integrated Jib-tip Wheel for Offsetting Jib
 - » Quick Pinning Offset Installation System
- Glide Swing
- 15,000 lb 2-Speed Auxiliary Hoist
- Hydraulic Tool Circuit at Tail Shelf

Recommended equipment, available through Altec Supply, include wheel chocks and outrigger pads.

CRANE SPECIFICATIONS

| | |
|--|---------------------------|
| Maximum Lift Capacity | 90,000 lb (40,823 kg) |
| Boom Length (5-Section) | 127 ft (38.7 m) |
| Powered Sheave Height | 135 ft (41.2 m) |
| Maximum Sheave Height with 2-Stage Jib | 189 ft (57.6 m) |
| Stowed Travel Height | 13.25 ft (4.04 m) |
| Vehicle Travel Length | 39.9 ft (12.2 m) |
| Two Speed Winch Capacity | 15,000 lb (6,803 kg) |
| 3 Position Out-and-Down Outriggers | |
| Full Span | 24 ft (7.3 m) |
| Mid Span | 17.9 ft (5.4 m) |
| Short Span | 8 ft (2.4 m) |
| Control System | Pilot-Operated, Hydraulic |
| ASME B30.5 Compliant | |

LOAD MOMENT AND AREA PROTECTION

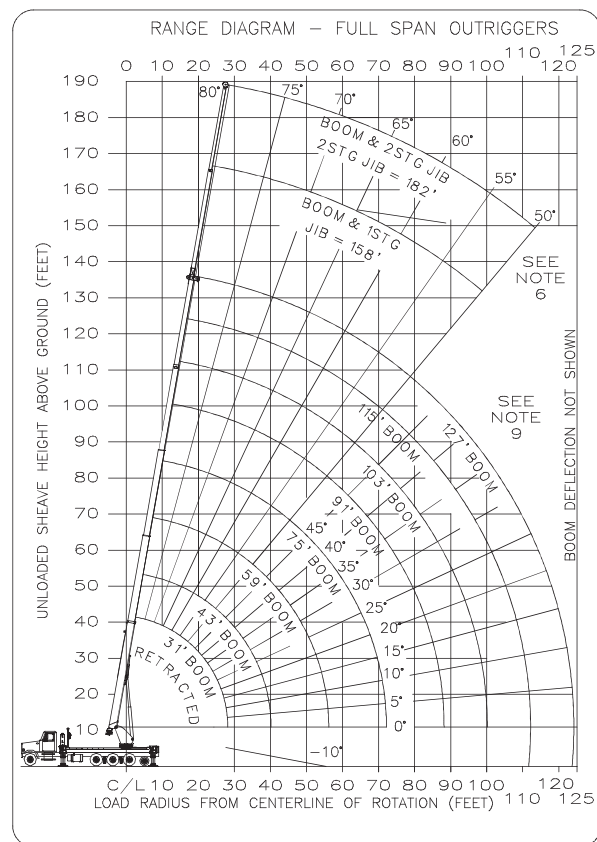


The convenient LMAP menu navigation with an intuitive user interface displays load on hook, rated capacity percentage, boom length and angle, load radius, and operator-defined protection with audible alarms. While the intuitive display and user interface are unique to Altec, the system's hardware consists of common "off-the-shelf" components that were critically selected for their performance and serviceability.

| UNIT | | RECOMMENDED CHASSIS DIM | | | | MINIMUM RECOMMENDED CHASSIS SPECIFICATIONS | | | | |
|-----------|------------------------|-------------------------|---------|---------|---------|--|-----------------------|-----------|--------------------------------------|-------------------|
| Model | Rear Axle | CA (in) | WB (in) | AF (in) | AS (in) | Front Axle Rating (lb) | Rear Axle Rating (lb) | GVWR (lb) | Frame Sec Modulus (in ³) | Frame RBM (in-lb) |
| AC45-127S | Tandem w/ Pusher & Tag | 212 | 299 | 140 | 54 | 20,000 | 52,000 | 72,000 | consult factory | |



LOAD CHART - FULL SPAN OUTRIGGERS



BOOM LOAD CAPACITIES IN LBS. WITH FULL SPAN OUTRIGGERS (24 FT)

AREA OF OPERATION

360° CAPACITY WORKING AREA WITH FULL SPAN

24 FT FULL SPAN AUX OUTRIGGER SPREAD

C/L ROTATION

24 FT FULL SPAN MAIN OUTRIGGER SPREAD

| LOAD RADIUS (FT) | 31 FT BOOM | 43 FT BOOM | 59 FT BOOM | 75 FT BOOM | 91 FT BOOM | 103 FT BOOM | 115 FT BOOM | 127 FT BOOM |
|------------------|------------|------------|------------|------------|------------|-------------|-------------|-------------|
| 7 | 73 90000 | 78 36000 | | | | | | |
| 8 | 71 82100 | 77 36200 | | | | | | |
| 10 | 67 71100 | 74 36500 | 79 35800 | | | | | |
| 12 | 63 62700 | 71 38700 | 77 36100 | 80 35500 | | | | |
| 15 | 57 50800 | 67 39700 | 74 38100 | 78 35700 | 80 22000 | | | |
| 20 | 44 36200 | 59 36900 | 69 37300 | 74 33200 | 78 22000 | 79 17100 | 80 12850 | |
| 25 | 28 27400 | 51 28100 | 63 28600 | 70 28800 | 74 20700 | 77 17100 | 78 12600 | 80 10000 |
| 30 | | 41 22300 | 57 22800 | 66 23000 | 71 18000 | 74 16800 | 76 12500 | 77 10000 |
| 35 | | 28 17700 | 51 18200 | 61 18400 | 68 15900 | 71 14500 | 74 12400 | 75 10000 |
| 40 | | | 44 14500 | 57 14800 | 64 14200 | 68 12700 | 71 11400 | 73 10000 |
| 45 | | | 36 11800 | 52 12200 | 60 12100 | 65 11200 | 68 10000 | 71 9050 |
| 50 | | | 27 9800 | 46 10100 | 57 10100 | 62 9900 | 65 8800 | 69 8100 |
| 55 | | | | 41 8500 | 53 8500 | 58 8500 | 63 8000 | 66 7200 |
| 60 | | | | 35 7200 | 48 7200 | 55 7250 | 60 7200 | 63 6400 |
| 65 | | | | 27 6100 | 44 6100 | 51 6200 | 57 6200 | 61 5700 |
| 70 | | | | 15 5100 | 39 5200 | 47 5300 | 53 5400 | 58 5100 |
| 75 | | | | | 33 4500 | 43 4500 | 50 4600 | 55 4450 |
| 80 | | | | | 26 3800 | 39 3850 | 46 3950 | 52 4000 |
| 85 | | | | | 17 3200 | 34 3300 | 43 3400 | 49 3400 |
| 90 | | | | | | 28 2800 | 39 2850 | 46 2900 |
| 95 | | | | | | 20 2350 | 34 2400 | 42 2450 |
| 100 | | | | | | 5 1900 | 29 2000 | 39 2050 |
| 105 | | | | | | | 22 1600 | 34 1700 |
| 110 | | | | | | | 13 1250 | 30 1350 |
| 115 | | | | | | | | 24 1050 |
| 120 | | | | | | | | 17 750 |
| | 0 22000 | 0 14000 | 0 8200 | 0 4700 | 0 2850 | 0 1900 | 0 1100 | 0 300 |
| | 500 | 415 | 300 | 280 | 250 | 210 | 190 | 150 |
| | 1000 | 770 | 560 | 420 | 350 | 315 | 280 | 250 |

JIB LOAD CAPACITIES (LBS) FOR ALL BOOM LENGTHS. JIB CAPACITIES ARE FOR FULL SPAN OUTRIGGERS (24 FT)

| LOADED BOOM ANGLE | 50° | 55° | 60° | 65° | 70° | 75° | 80° |
|---------------------|------|------|------|------|------|------|------|
| FIXED 31 FT JIB | 1300 | 1800 | 2400 | 3400 | 4000 | 4000 | 4000 |
| TELESCOPING JIB | | | | | | | |
| RETRACTED 31 FT JIB | 1000 | 1700 | 2400 | 3400 | 4000 | 4000 | 4000 |
| EXTENDED 55 FT JIB | 700 | 1300 | 1800 | 2500 | 2600 | 2600 | 2600 |

NOTE: RATINGS ABOVE THE HEAVY LINE ARE BASED ON STRUCTURAL COMPETENCE AND NOT ON MACHINE STABILITY

* DO NOT OPERATE JIBS BELOW THIS ANGLE UNLESS BOOM IS FULLY RETRACTED. SEE NOTE 6.

970339443-H (SHEET 1)

Note 1: When jib is erected, boom must be fully retracted before lowering below minimum boom with jib angles. Retracted boom with jib has no lifting capacity below a 50 degree angle with full span outriggers and below a 65 degree angle not shown on jib load rating chart.

Note 2: Do not lower boom into this area, instability may occur. Hydraulic pressure may not allow raising the boom without retracting boom first.

Charts published herein are intended to be a guide only and should not be construed to warrant application for lifting purposes. Consult supplied operation manual for further details.

FRONT WINCH CONTROL

The lower winch control reduces slip/trip/fall hazards because the load hook can be disconnected without climbing to the crane controls.



DUAL ENTRY CAB

Altec's patented dual entry cab provides safe access/egress throughout the entire range of rotation. The 20 degree tilt feature maximizes the viewing spectrum on the job site.



LMI REEL

The load moment indicator (LMI) reel is mounted at boom heel and protected by a metal cover while the A2B cable is routed through the boom, providing better reliability.



866-966-2969
sales@altec.com

AIOSAC45127S-518-v1-r4

33 Inverness Center Parkway
Birmingham, AL 35242
Fax 205.449.4774
www.altec.com

For more complete information on Altec products and services, visit us on the web at www.altec.com.

© 2020 Altec Inc
All Rights Reserved

Material and specifications are subject to change without notice. Featured units in photos may include optional features. Please contact an Altec representative for all available options. Charts published herein are intended to be a guide only and should not be construed to warrant application for lifting purposes. Consult supplied operation manual for further details.

Altec® and the Altec logo are registered trademarks of Altec Inc in the United States and various other countries and may not be used without permission.

